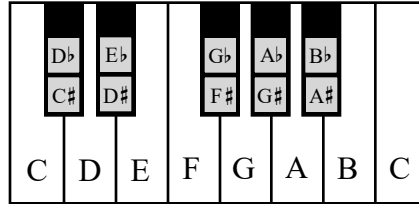


# Enharmonic Notes I

In music there are many notes that have more than one name.  
**Enharmonic** notes sound the same but are spelled differently.



If you look at a piano keyboard you will see that D $\sharp$  and E $\flat$  are played with the same key.

1. Use a quarter note to write in the enharmonic equivalent of the given note.

2. Use a quarter note to write in the enharmonic equivalent of the given note.

3. Use a quarter note to write in the enharmonic equivalent of the given note.

4. Use a quarter note to write in the enharmonic equivalent of the given note.

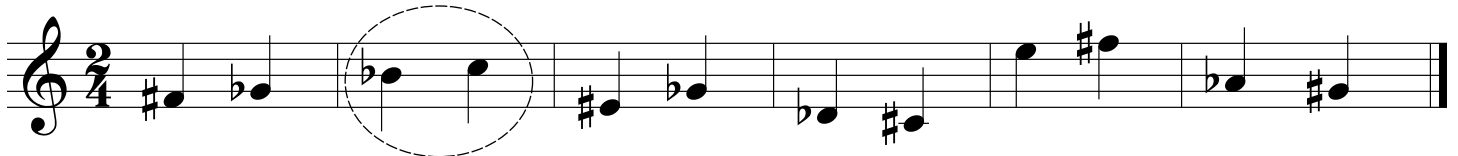
5. This is the first part of a familiar song written with many enharmonic notes.

Identify the song and write the name here: \_\_\_\_\_

# Enharmonic Notes II

Complete these exercises.

1. Circle the measures in which the notes are *not* enharmonically equivalent.

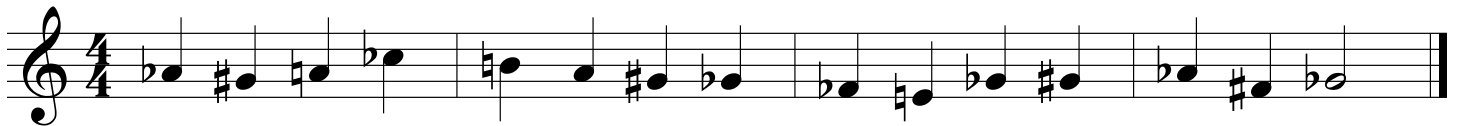


2. Identify these familiar songs.

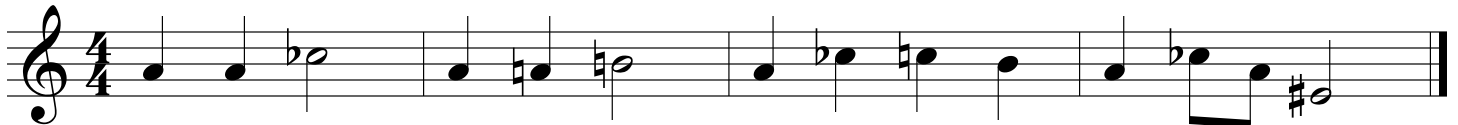
Name of song \_\_\_\_\_



Name of song \_\_\_\_\_



Name of song \_\_\_\_\_



Name of song \_\_\_\_\_

