

Stems

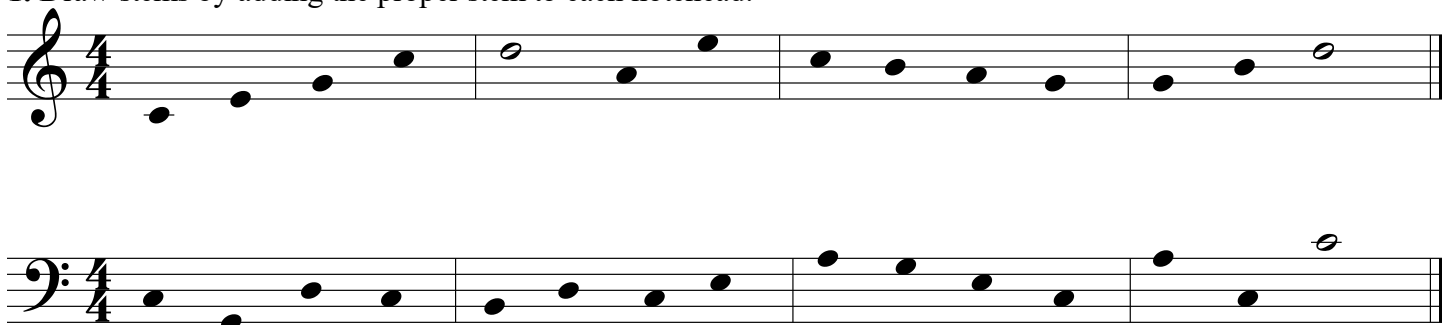
Stems are used to help determine what rhythmic value a note will have. By adding a stem to an open notehead you change the value of the note from a whole note to a half

Notes appearing on or above the middle staff line have downward stems. They are drawn on the left side of the notehead. Notes appearing below the middle staff line have upward stems. They are drawn on the right side of the notehead.

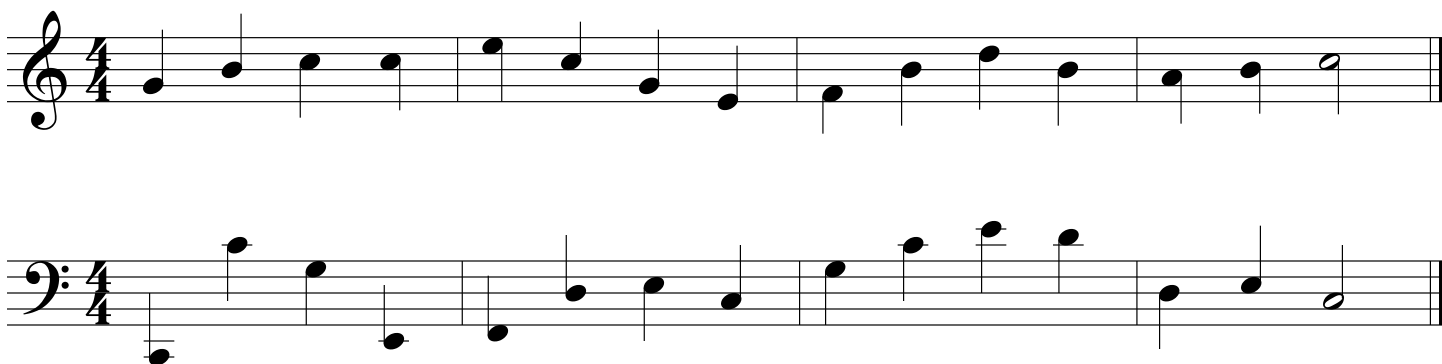
$$\circ = 4 \quad \text{♩} = 2$$



1. Draw stems by adding the proper stem to each notehead.



2. Circle the incorrect stems.



3. Add stems where needed.

